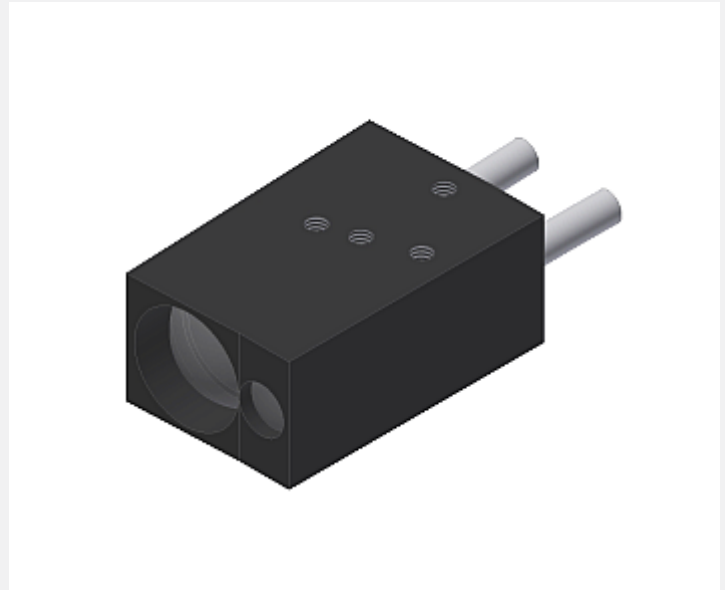


FIO Series

► KL-D-0°/2.5°-300-A2.0

Optical frontend

- Suitable for through-beam fiber optics of type D-S-A2.0-(2.5)-...-67° (fiber optics is available in various lengths)
- Mounting vertical (0°/2.5°) or symmetrical (1.25°/1.25°)
- Working distance typ. 300 mm (100 mm ... 500 mm) or in case of symmetrical mounting: typ. 299 mm
- Also suitable for detecting highly absorbent objects (e.g. black painted parts)
- Minimum color change with a change in the distance
- Can be focused
- Scratch-resistant optics made of glass
- Sturdy aluminum housing, anodized in black



Design

Product name:

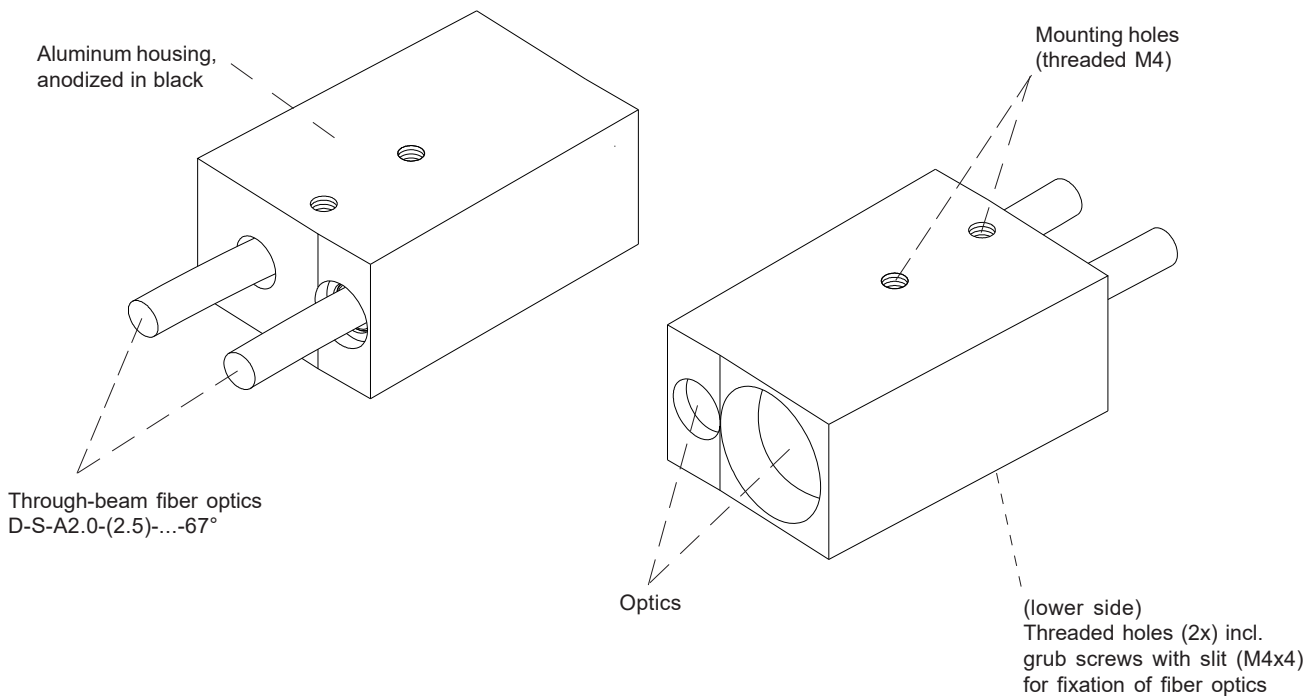
KL-D-0°/2.5°-300-A2.0

Suitable for fiber optics (please order separately):

Through-beam fiber optics

D-S-A2.0-(2.5)-(length)-67°

(standard lengths for fiber optics: 600 mm or 1200 mm)

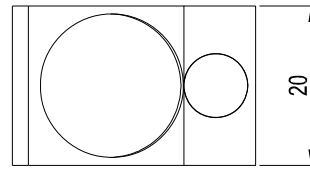




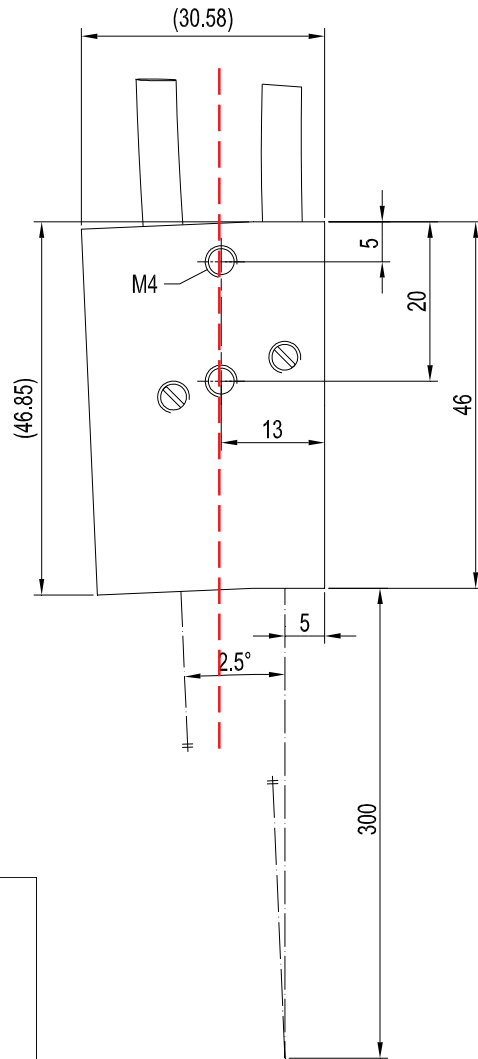
Dimensions

KL-D-0°/2.5°-300-A2.0

In case of vertical mounting (0°/2.5°):
Working distance typ. 300 mm



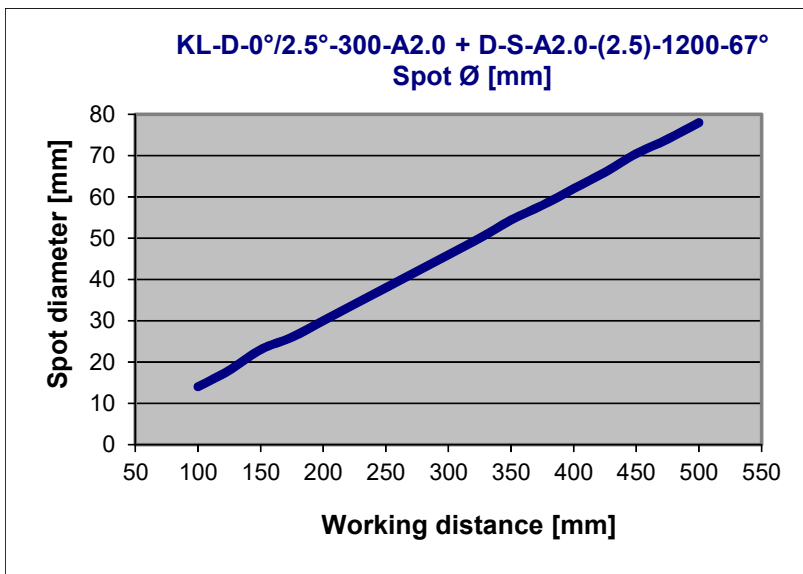
Vertical mounting



KL-D-0°/2.5°-300-A2.0 with D-S-A2.0-(2.5)-1200-67°:

Spot diameter:

14 mm (typ.) at a working distance of 100 mm
46 mm (typ.) at a working distance of 300 mm
78 mm (typ.) at a working distance of 500 mm



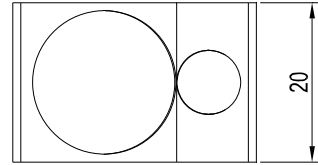
All dimensions in mm



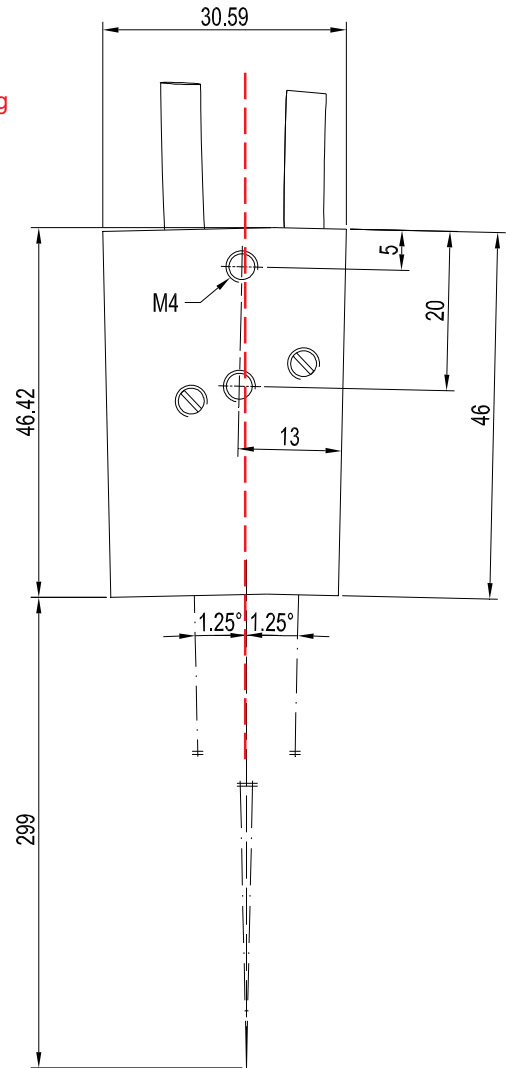
Abmessungen

KL-D-0°/2.5°-300-A2.0

In case of symmetrical mounting (bisecting 1.25°/1.25°):
Working distance typ. 299 mm



Symmetrical mounting
(bisecting)



All dimensions in mm