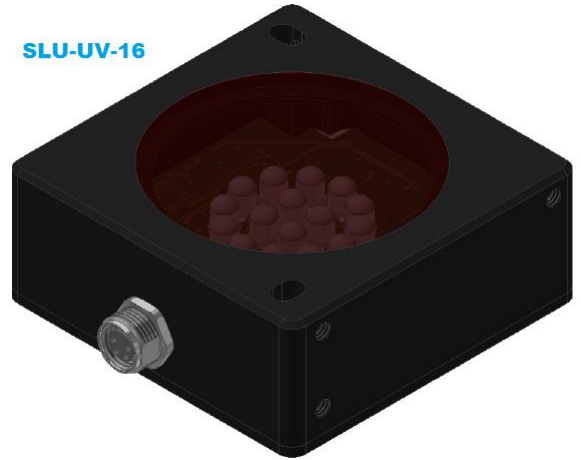


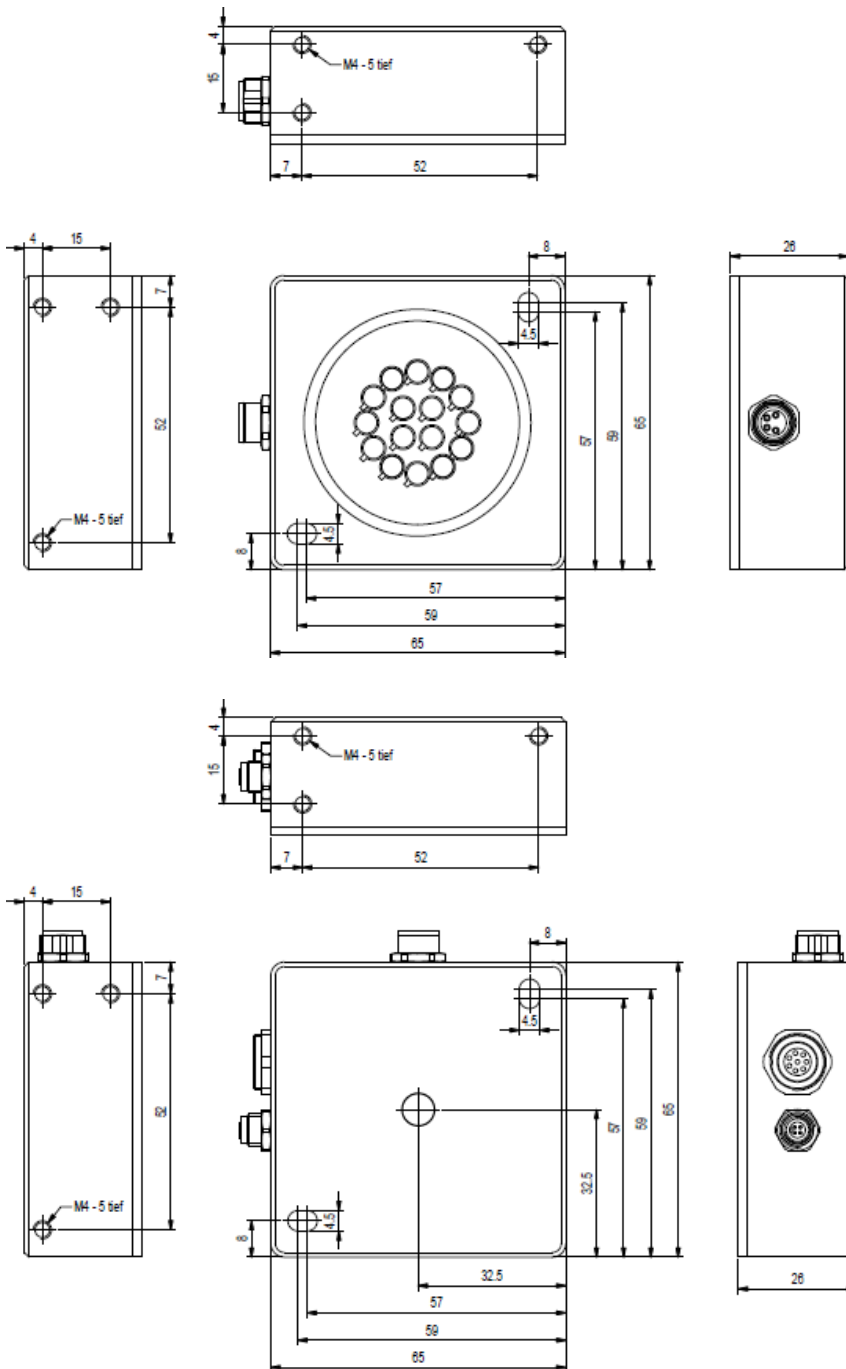
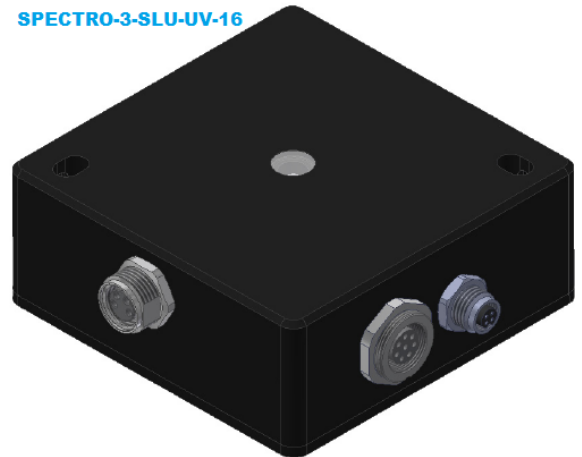
1. Color UV sensor SPECTRO-3-SLU-UV-JR with side light unit SLU-UV-16

The color sensor type **SPECTRO-3-SLU-UV-JR** can be connected to the UV side light unit type **SLU-UV-16**. The system is used for fluorescent objects (excitation in the UV range). The side light unit delivers a bright UV light and can be used for transmission as well as for reflection at a distance of 50mm to 500mm (dependent of the transmission, reflectivity, absorption and turbidity).

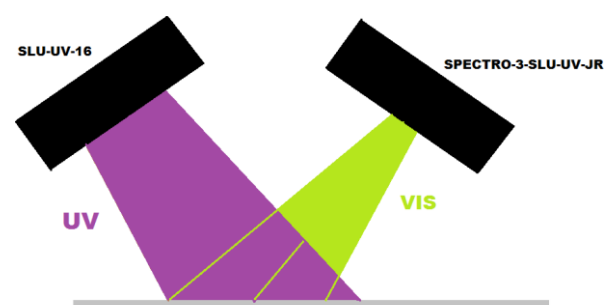
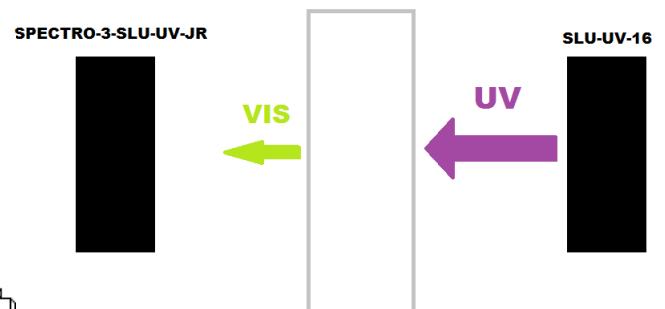
SLU-UV-16



SPECTRO-3-SLU-UV-16



TRANSMISSION



REFLECTION