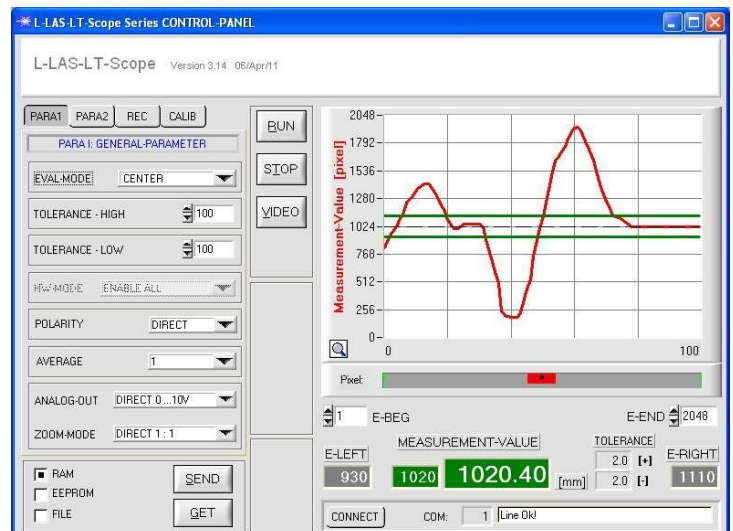
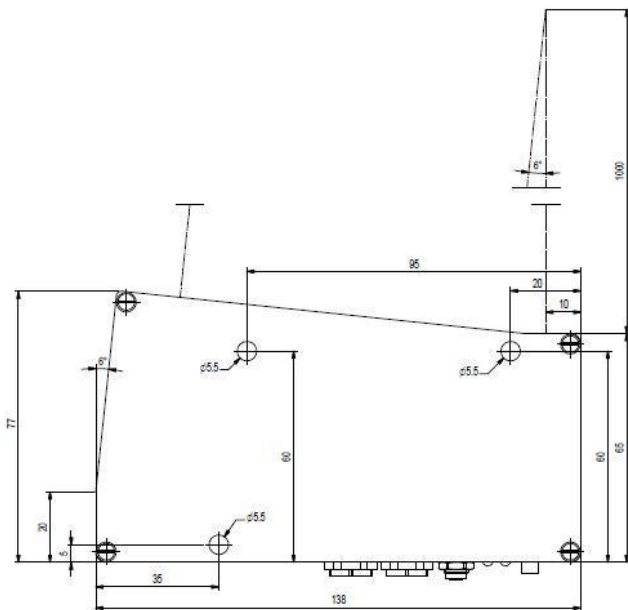
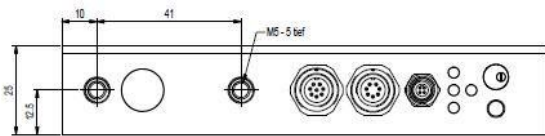




### 1. Laser displacement sensor:

**L-LAS-LT-1000, L-LAS-LT-1000-4/20, L-LAS-LT-1000-HS, L-LAS-LT-1000-HS-4/20, L-LAS-LT-1000-MA, L-LAS-LT-1000-MA-4/20, L-LAS-LT-1000-SL, L-LAS-LT-1000-HS-MA, L-LAS-LT-1000-HS-MA-4/20, L-LAS-LT-1000-HS-SL**

The L-LAS-LT-1000-... types come with a measurement range of 1000mm (500mm ... 1000mm) and with a reference distance of 1000mm. The laser beam is collimated and the laser spot size at a distance of 1000mm is around 3mm x1mm. The scan frequency for the -HS types (high speed) is approximately 800Hz. The laser sensors can be parameterized via the Windows® software **L-LAS-LT-Scope V3.14**, there is an analog signal (either 0V...10V or 4mA...20mA) available at the output as well as three digital outputs OUT0, OUT1, OUT2. Furthermore, there are two digital inputs IN0 and IN1 disposable.



**L-LAS-LT-1000**

