

SPECTRO1-Scope: Changes due to software update from SPECTRO1-Scope V2.5 to V2.6

This manual summarises the changes that were made with the software update from **SPECTRO1 V2.5 to V2.6**.

A software update from V2.x to V2.6 can be performed quite easily.

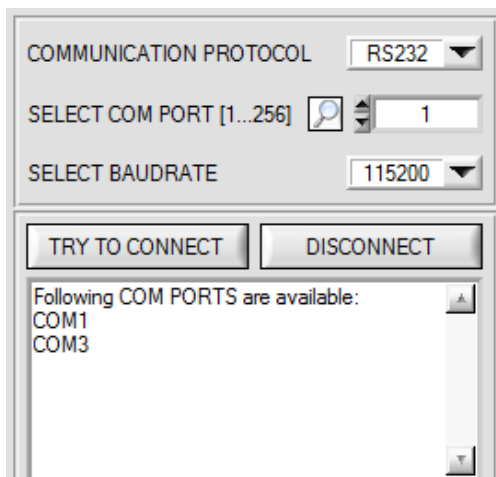
All you need is the FirmwareLoader V1.1 and the firmware files for version 2.6.

The FirmwareLoader V1.1 can be found on the software CD/DVD that is provided with the sensor or can be downloaded from our homepage.

The firmware files are available from your sensor supplier.

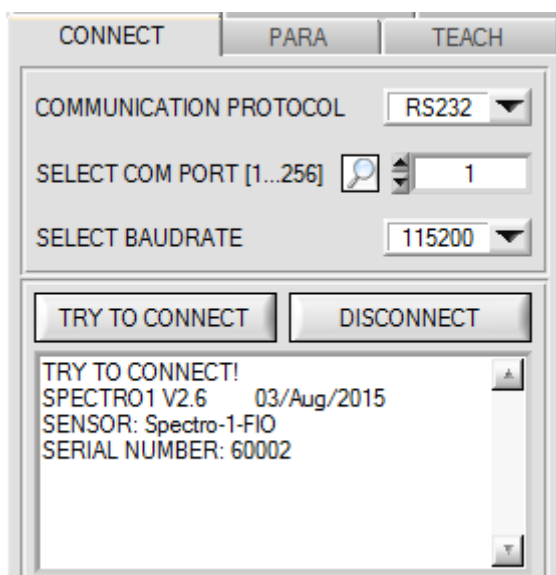
The respective procedure is exactly described in the "[Manual FirmwareLoader V1_1](#)" file (see software CD/DVD: Folder Support Software → Version Update → FirmwareLoader V1.1).

Change 1:



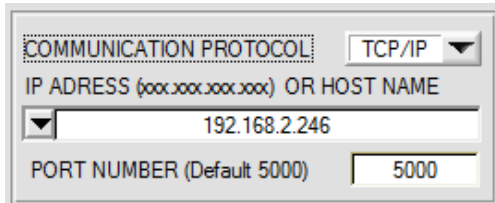
A click on the magnifier symbol in the **CONNECT** tab opens a list with all the possible **COM PORTS** in the display.

Change 2:



With **TRY TO CONNECT** now in addition to the sensor firmware and sensor serial number also the sensor type is displayed.

Change 3:



COMMUNICATION PROTOCOL: TCP/IP
IP ADDRESS (xxx.xxx.xxx.xxx) OR HOST NAME: 192.168.2.246
PORT NUMBER (Default 5000): 5000

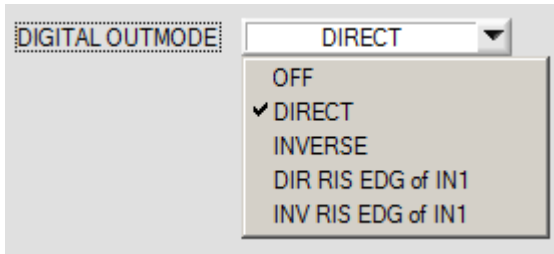
The **PORT NUMBER** for a TCP/IP connection as standard is pre-initialised as **5000**.

The **cab-4/ETH** RS232 to Ethernet adaptor now is available for communication of the sensor through a local network. With this adaptor a connection to the sensor can be established using the **TCP/IP** protocol.

Parameterisation of the **cab-4/ETH** adaptor (assigning of IP address, baudrate setting, ...) can be done with the **SensorFinder software** that is available free of charge on the internet.

In order to establish a connection through the adaptor, its IP address or HOST name must be entered in the input field **IP ADDRESS (xxx.xxx.xxx.xxx) OR HOST NAME**. The DROP DOWN menu (down arrow) shows the last 10 IP addresses that were used. An address from this list can be directly selected by clicking on the respective item. The DROP DOWN list is saved and is thus always available. The **PORT NUMBER** for the network adaptor is set as **5000** and must not be changed.

Change 4:



DIGITAL OUTMODE: DIRECT
OFF
✓ DIRECT
INVERSE
DIR RIS EDG of IN1
INV RIS EDG of IN1

DIGITAL OUTMODE was extended by "direct at a rising edge of IN1" (**DIR RIS EDG of IN1**) and "inverse at a rising edge of IN1" (**INV RIS EDG of IN1**).

Unlike **DIRECT** and **INVERSE**, the outputs here are updated only at a positive edge at input IN1.