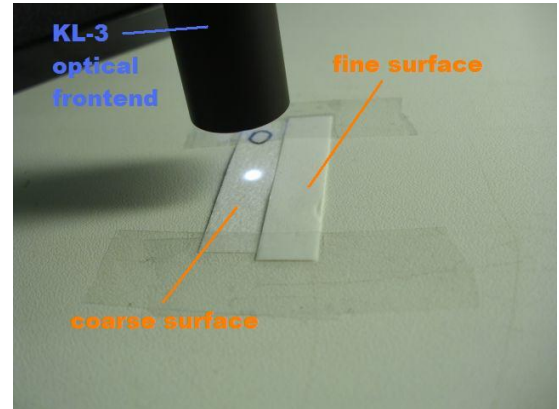




1. Detection of the correct direction of a laminated band (front side / back side detection).

The direction of a laminated band (Gore laminated band) must be controlled. The color of the band is either white, black or red. For this application we have used a color sensor in combination with an optical fiber and an additional optical frontend type. The distance to the object surface was 11 mm and the spot size at this distance approximately 1 mm. As shown in the screenshots, there is a big difference between the signals, especially of the INT, of both directions. The red circle shows the results of the coarse side of the laminated band, whereas the green circle informs about the fine side of the laminated band.



Used sensor: SPECTRO-3-FIO-CL with R-S-A2.0-(2.5)-1200-67° and KL-3-A2.0.

Field of application:
pharmaceutical industry

