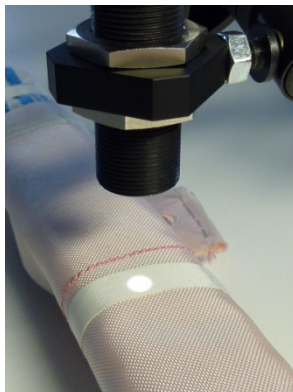




1. Detection of a white tape on a pink airbag textile

The white tape on a pink airbag textile must be detected. Thereby it must be differentiated between the color of the white tape on the one hand and all of the other background colors of the airbag (pink, pink with red thread, blue and white textile) on the other hand. Thus, with the color sensor **SPECTRO-3-FIO-CL** in connection with an optical fiber type **R-S-A2.0-(2.5)-1200-67°** and an optical front end type **KL-M18-A2.0**,



the COLOR GROUP mode is used at which the white tape covers one group, whereas the other group is containing the pink, pink-red, white and blue background. As shown in the screen shots, the white tape can be proper detected.

